

State of Wyoming Corner Record

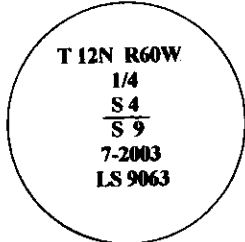
(In compliance with the *CORNER PERPETUATION AND FILING ACT*, Wyoming Statutes, 1997, Section 33-29-140, et seq., and the Rules and Regulations of the Board of Registration for Professional Engineers and Professional Land Surveyors)

Reverse side of this form may be used if more space is needed.

Record of original survey and citation of source of historical information (if corner is lost or obliterated). Description of corner monumentation evidence found and/or monument and accessories established to perpetuate the location of this corner. Sketch of relative location of monument, accessories, and reference points with course and distance to adjacent corner(s) (if determined in this survey). Method and rationale for reestablishment of lost or obliterated corner.

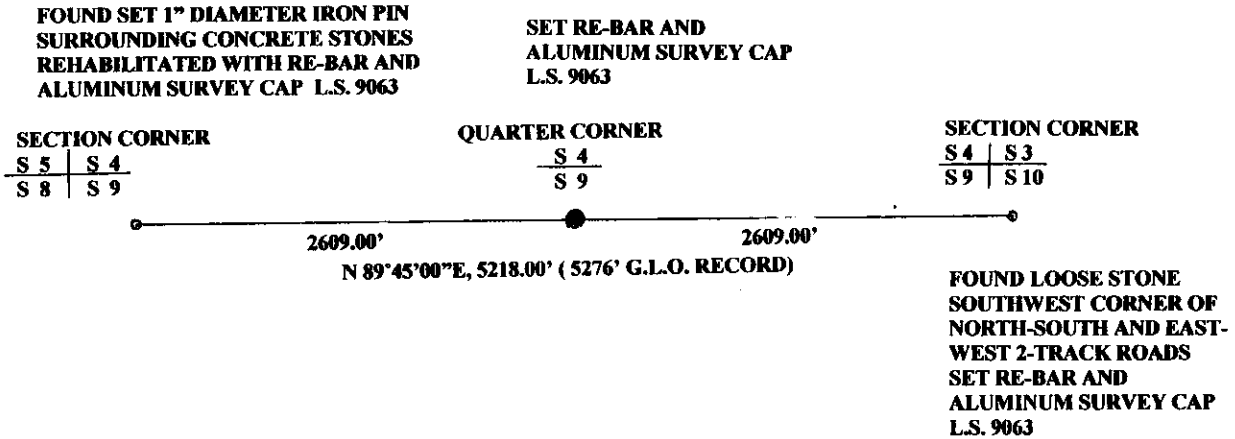
FOUND: I found 3 loose stones, grouped in a small area, at the search location for the North Quarter Corner of Section 9. A north-south fence line intersects the north section line of Section 9 approximately 100' west of this location.

SET: An aluminum survey cap, marked L.S. 9063, and marked appropriately for the Quarter Corner Straight line and equidistant between the Northwest and Northeast Corners of Section 9. Placed the Found stone and a few smaller stones at this position. No other stones are visible anywhere in the Area. One of these stones substantially fits the original G.L.O. record size dimensions.



BASIS OF BEARING- G.L.O. RECORD BEARING NORTH LINE OF SECTION 9

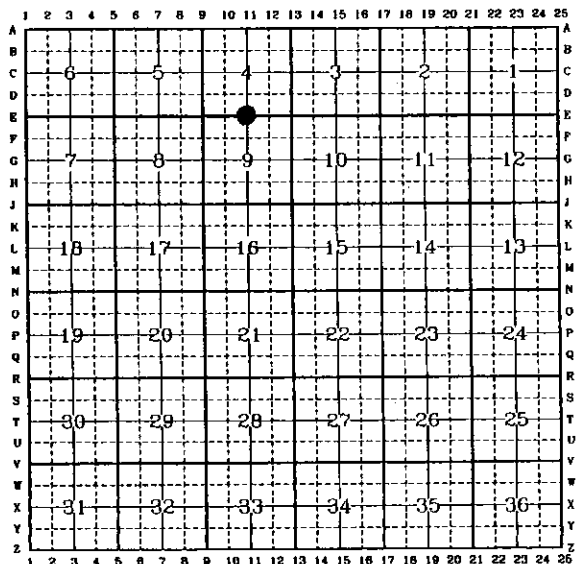
MONUMENT DESCRIPTION



Retracement Survey Section 9 (Record of Survey as Exhibit for sale of property)

Date of Field Work: 7-2003 Office Reference: _____

CROSS INDEX DIAGRAM



Land Surveyor / Firm / Address
MICHAEL J. GRONSKI

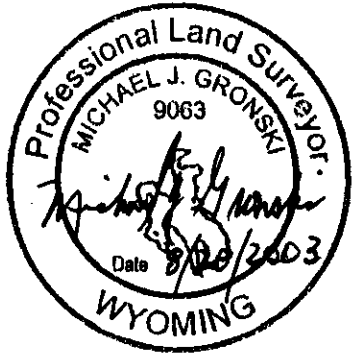
G&S SURVEYS

5211 OGDEN ROAD

CHEYENNE, WYOMING 82009

 Telephone: (307) 637-6127

This corner record was prepared by me or under my direction and supervision.
SEAL & SIGNATURE



Corner Name: NORTH QUARTER CORNER Section: 9 T 12N. R 60W.; 6TH P.M. Cross-Index No.: E-11
 SBRPEPLS/PLSW: March 1994; PLSW January 1998

RECORDED 1/11/2008 AT 1:13 PM REC# 491255 BK# 2040 PG# 1176
 DEBRA K. LATHROP, CLERK OF LARAMIE COUNTY, WY PAGE 1 OF 1